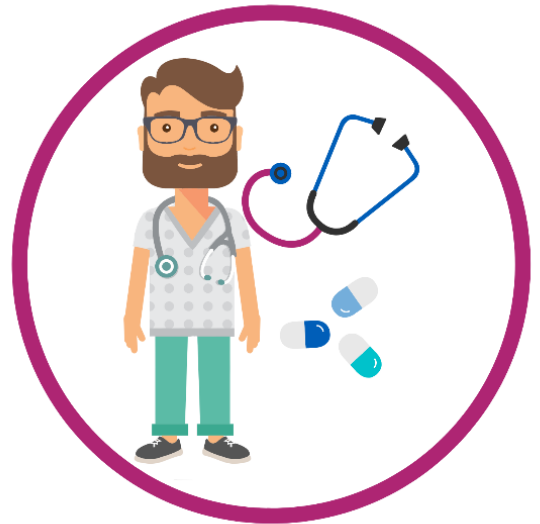


## Registering with a GP practice

### Why should I register?

A GP is a local family doctor. It's important to be registered with a GP so you can see them when you are sick. It also means:

- Over time, your GP practice develops a good understanding of your healthcare needs.
- As well as GPs you can also see practice nurses and pharmacists.
- You can access urgent care when you need it.
- You can access health advice like diet and smoking.
- You stay up to date on vaccinations.



**IT'S FREE TO REGISTER**

## How should I register?

Find a GP practice near you on the NHS website [www.nhs.uk](http://www.nhs.uk) or the practice's own website. You can register with any practice covering the area where you live.

You'll be asked to fill in a registration form. You can do this online via the practice website. Let the practice know if you're having problems and they can help.

You may be asked for proof of identify, e.g. a passport or birth certificate. This may be used to check your details match the NHS central patient registry. You should still be able to register even if you don't have these documents to hand.



Anyone can register – if you're an asylum seeker, refugee, homeless patient or overseas visitor, whether lawfully in the UK or not.

For more information visit: [www.nhs.uk/using-the-nhs/nhs-services/gps/how-to-register-with-a-gp-practice](http://www.nhs.uk/using-the-nhs/nhs-services/gps/how-to-register-with-a-gp-practice).

Or contact the Patient Advice and Liaison Team:

 0118 982 2720

 [bwccg.bwpalscomplaints@nhs.net](mailto:bwccg.bwpalscomplaints@nhs.net)